

Breed-compendium for the national breed:

Danish Spitz (Dansk Spids)

Country of origin: Denmark

Not officially recognized by the FCI



**Published by The Society for Danish Spitz -
a breedclub under The Danish Kennel Club.**



**Translated and edited by Vibeke Rørdam,
chairman of the committee for National Breeds in The Danish Kennel Club**

General appearance

General appearance: The Danish Spitz is a typical Spitz slightly below mediumsize. It is elegant yet robust. It is rectangular in body. The ears are relatively big and pointed. It moves effortless and with efficiency. The gender-identity is distinct.

Height at the withers: Males: 43 – 49 cm. (The ideal is 46 cm).
Females: 39 – 46 cm. (The ideal is 41 cm).

Important proportions: The body is slightly longer than the height at the withers. Muzzle to skull-ratio is 1:1 ie. they are of the same length.



Bitch

Excellent type. Youngster with correct bodyproportions.

(Shown in summer-coat. Correct biscuit colour).



Male

Excellent type. Masculine and elegant yet robust.

(Off-white colour. In full and correct coat)

The head: Shape and proportions



Head: Of middle size and wedgeshaped – seen from above and in profile.

Skull: Slightly rounded with well-marked superciliary arches.

Stop: Clearly defined.

Nose: Black or brown.

Muzzle: The length is half the total length of the head. Tapering from the stop to the nose in both depth and width. The nasalbridge is straight.

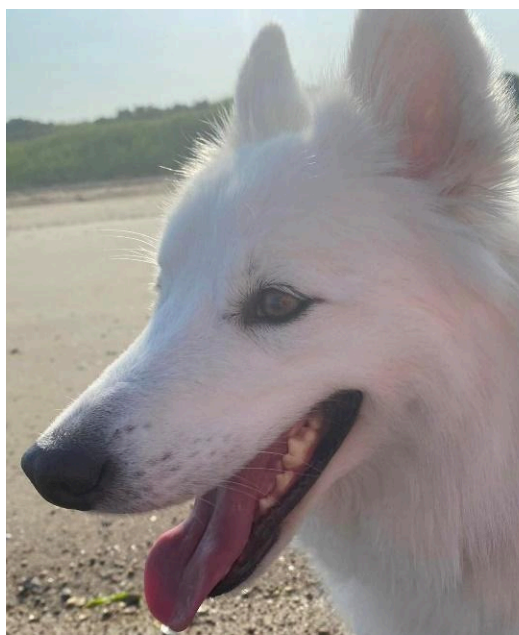
An adult female in front of an adult male - both with excellent headproportions.

Faults in headproportions:



Muzzle too short.

Cheeks a little too full.



Muzzle too long.

Stop is too flat.



Skull too domed/rounded:
(too Samoyed-like).

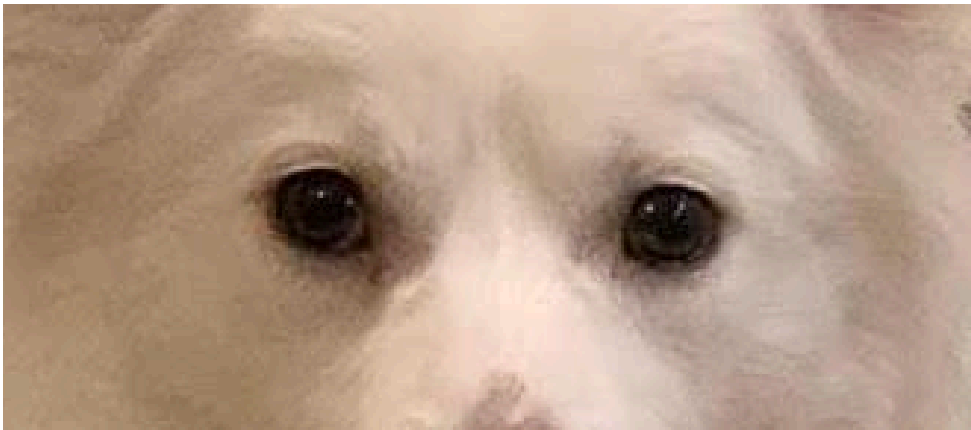
Stop is too distinct.

The head: The eyes/expression

Eyes: Of middle size with a bright, calm, and energetic look. The colour is dark brown.

Shape: The eyes are of oval shape, but appear rather more round than almond-shaped. They must not be protruding.

Eyerims: The eyerims are pigmented.

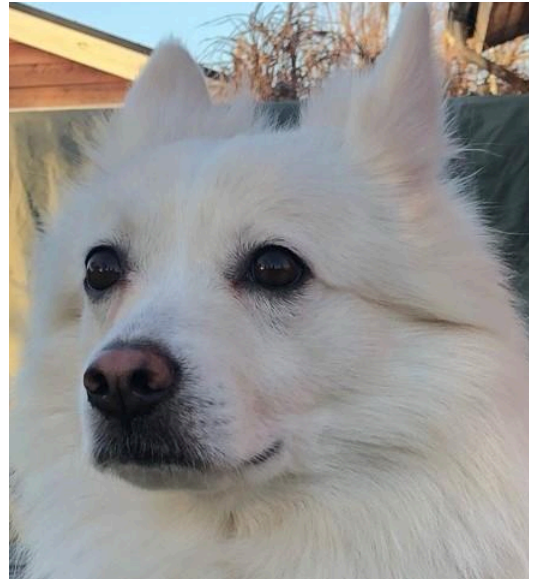


Two dogs with correctly, ovalshaped eyes of medium size and dark brown colour, and with dark pigmented eyerims.

Acceptable eyes



The eyes may not be any rounder.

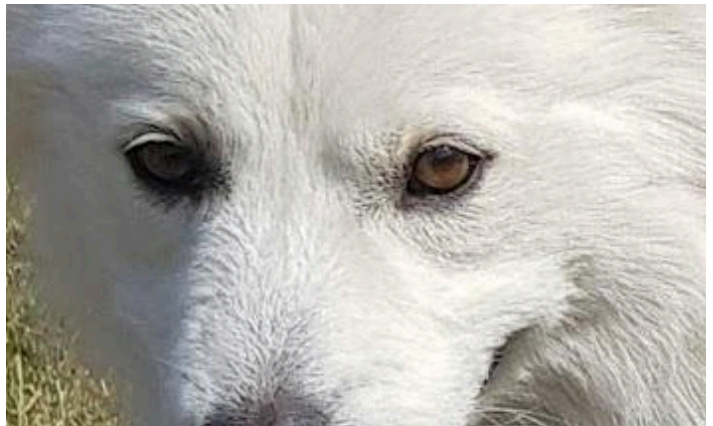


The eyes are almost protruding.

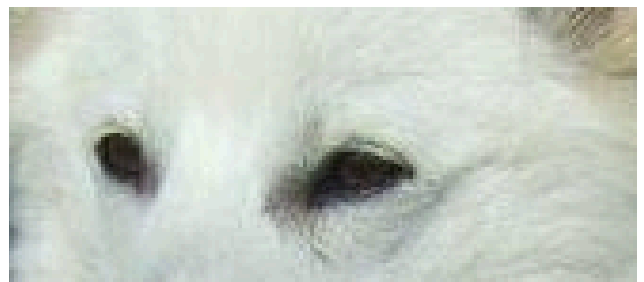
Faults:



Protruding eyes



Light eyes - very undesirable.



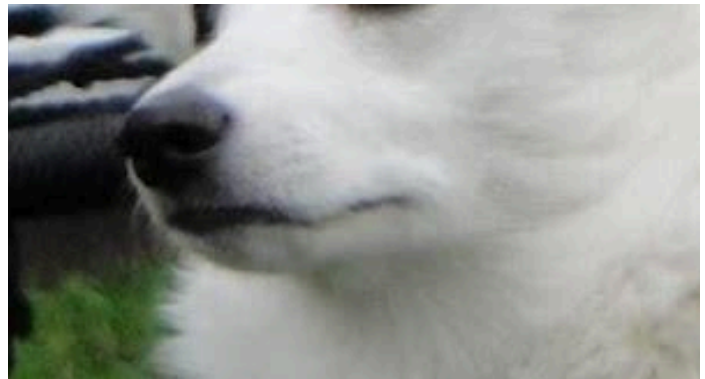
Eyes too obliquely set

The head: Lips, bite and cheeks

Lips: Tight-fitting and pigmented.

Jaws and bite: Strong jaws with a welldeveloped scissor- or level bite.

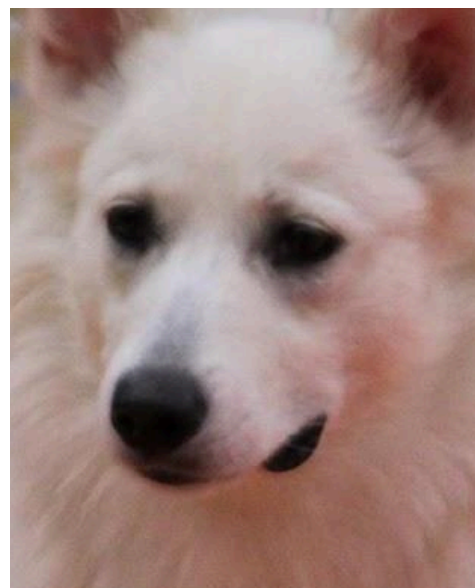
Cheeks: The cheeks are lightly rounded - but not prominent!



Faults:



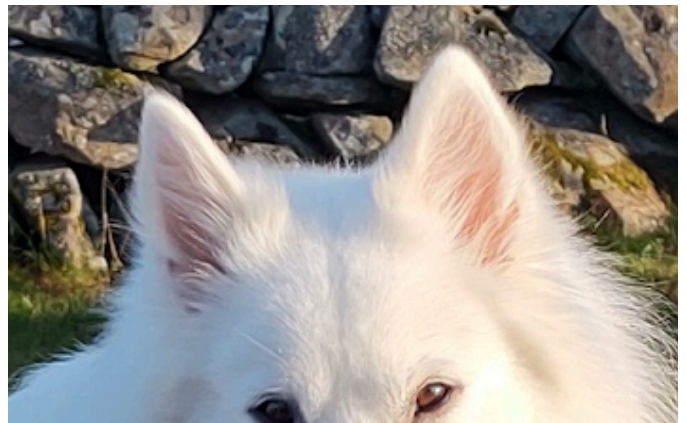
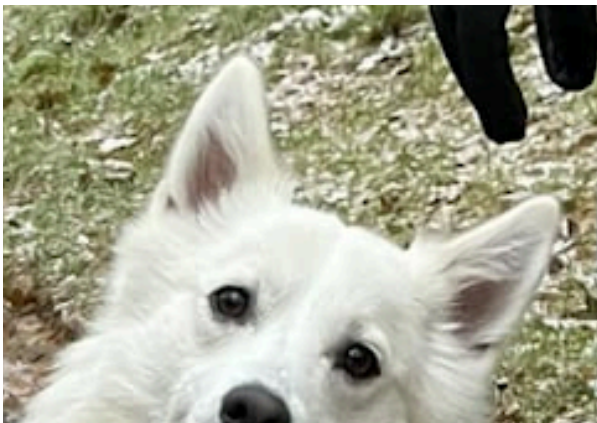
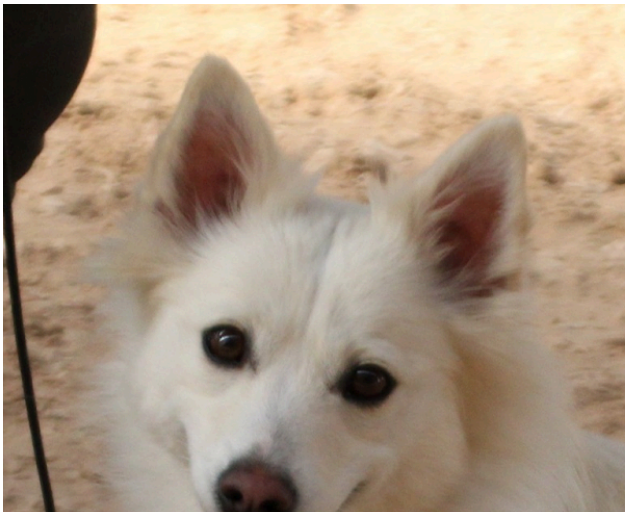
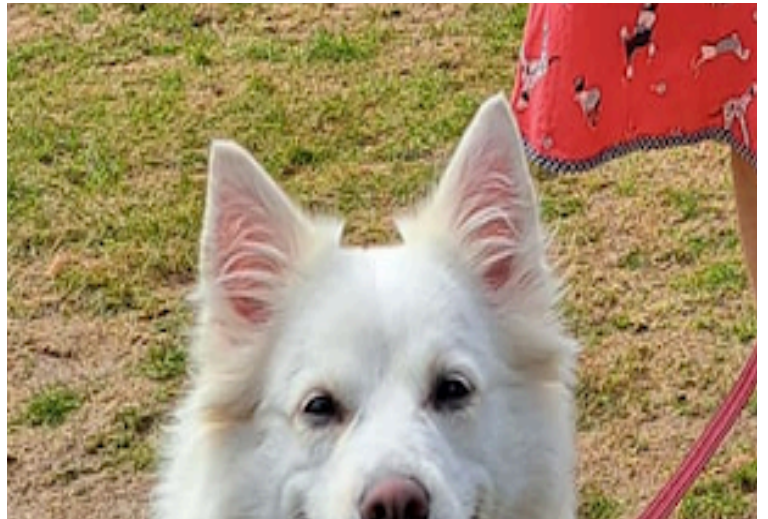
Samoyed smile - very undesirable!



Loose lips - NOT desirable!

The head: The ears

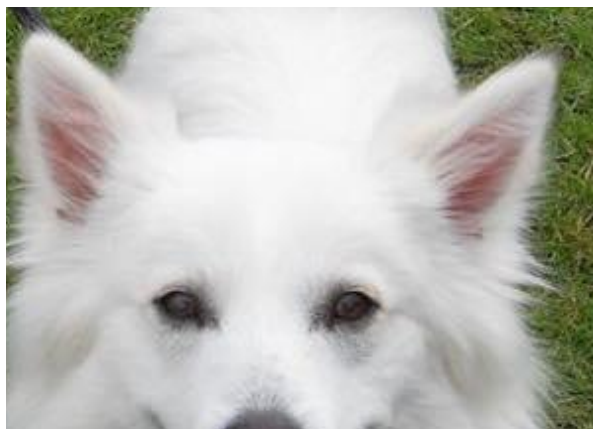
Ears: Pointed. Rather (relatively) big and triangular with a broad basis. Set high on the skull. They are supple and always in movement.



Faults:



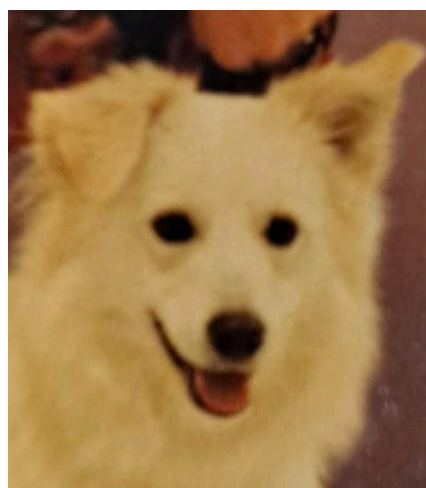
Ears are too large.



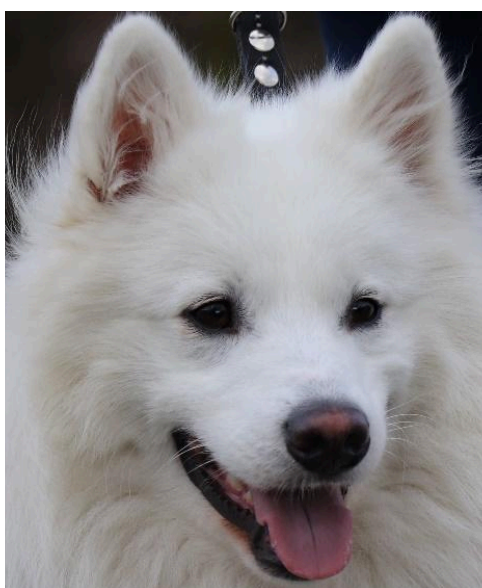
Low set and carried ears



“Flappy” ears



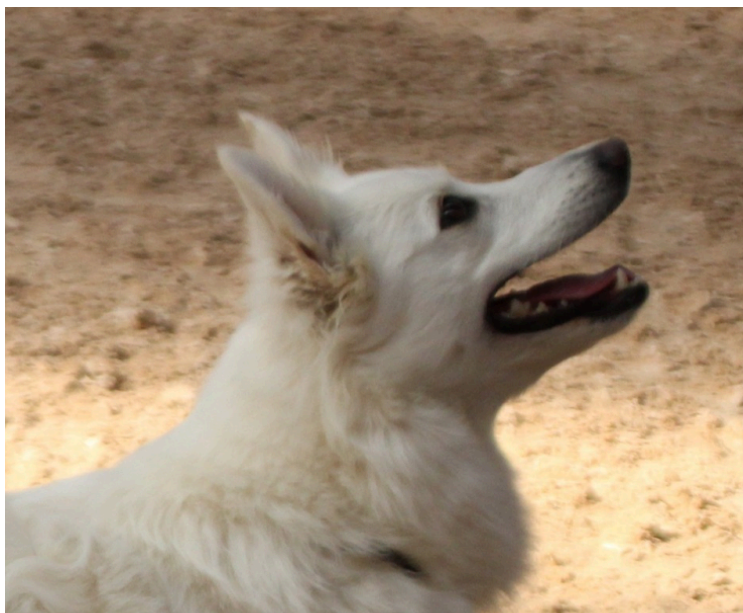
Unevenly carried, soft ears.



Too small, with rounded tips and too thickly covered in coat. (Not only the ears, but the entire head and expression is Samoyed-like).

The neck

Neck: Of moderate length, strong, and dry with a well arched nape. The head is carried high. There is no loose skin around the neck.



The arch is difficult to show, but should be easily felt. These are all well arched necks of good lengths

Body & proportions

Body: Rectangular. The body is slightly longer than the heights at the withers. Strongly built without any coarseness.

Important points to pay attention to: The Danish Spitz must never in general appearance, in coat texture - or amount of coat - resemble or be mistaken for a Samoyed.

Remember the general appearance: *“Elegant yet robust”, and “a strongly built body without any coarseness”*.



Excellent body-proportions, correct coat-structure, amount of coat and correct biscuit colour.

Neither the trousers nor the coat on the forechest may be any more abundant than this.

Top- & underline, chest, back & croup

Topline: Level.

Withers: Defined.

Back: Level and of moderate length.

Loin: Short.

Croup: Short and rounded.

Chest: Rather long, Spacious – not too broad – with a welldefined forechest. Reaches to the elbows in depth.

Underline and Belly: Slightly tucked up



Overall: A very feminine bitch of excellent type.

Excellent topline, level back of moderate length, rounded croup, correct tailset, long deep brisket and excellent slight tuck-up.

Excellent bisquit colour - evenly distributed.

Acceptable underlines



Both the female and the male are tucked up to the max - acceptable tuck-ups, but not the most desirable ones.

Faulty underline



This dog is overweight, the underline is therefore heavy, and the tuck-up almost non-existing.

Something very undesirable for the *“Elegant yet robust”* breed.

Coat

Coat: Hair: Moderate long. The guardcoat is a little rough with a soft and thick underwool. The coat is a little longer underneath the ears. The tail is well brushed (bushy). The guardcoat lies flat and is not allowed to stand out from the body.

Colour: From off-white to bisquit. The colour can also appear a delicate pink – but must never give a light brown or pure white impression.



Two dogs with excellent, flat/lying coats - both in quality, amount and colour:

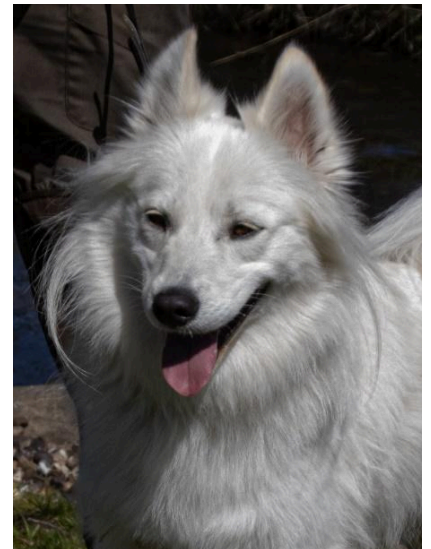
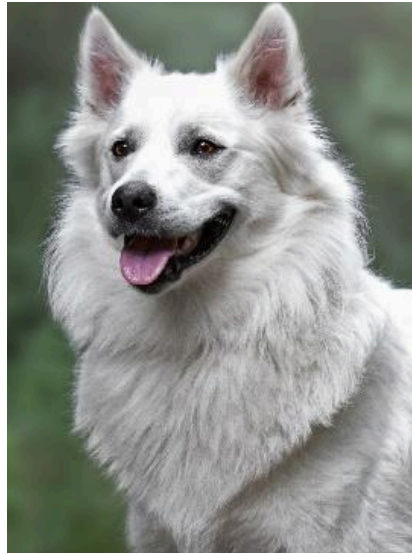
A bisquit bitch

(The bisquit colour is defined like this: Each hair consists of 2 colours: White and bisquit, and the undercoat is light).



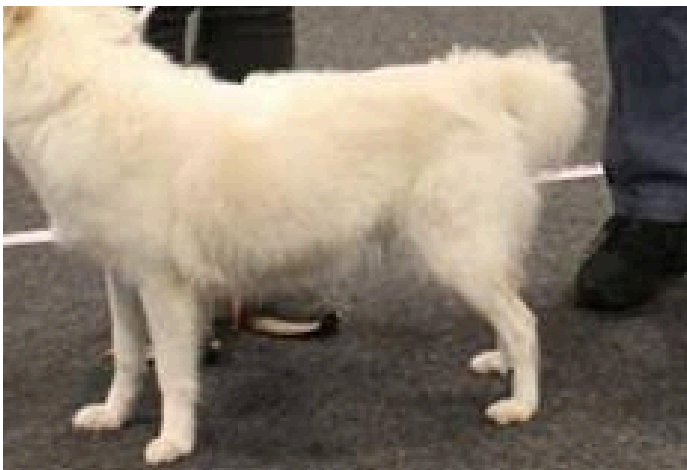
An off-white male

The ruff



Clearly marked ruffs on the first 2 dogs, and correct longer hairs under the ears on the one on the right. This might be maximum length, though.

Please note:



Biscuit-coloured dogs can get darker with age - but they still have to be biscuit and not light brown. (Both examples above are correct for older dogs, but it should not be darker than the one on the right.)

Faults:



Coat too abundant and standing out from the body. Too Samoyed-like and not at all desirable.



Lack of coat, and coatquality a little too soft.



A pure, snow-white colour without any biscuit. A serious fault.

Faults in body & coat:



Body & coat:

Square built, lacks depth in the chest and is very high on the legs.

Coat a little soft.



Body & coat

Correct proportions, but seems long because of too much coat on the forechest. He is overweight and therefore on the verge of being coarse and *too Samoyed-like* - also regarding the abundance of coat.



Coat:

Bisquit not evenly distributed throughout the coat, but located in a spot. *Very undesirable.*

Limbs, forequarters

Forequarters: The front legs are straight, muscular, and dry. The angulation allows free movements.

Forefeet: Slightly oval with well arched and tight-fitting toes. Well-developed pads.



Faults:



Long and flat feet, feet turning outwards.



Pasterns too steep/straight.

Limbs, hindquarters

Hindquarters: The hindlegs are strong and muscular with a moderate angulation, allowing a free movement and a strong action/drive from behind.

Hindfeet: Like the forefeet

Gait/movement: Efficient and without effort. Very enduring.



Well-angulated hindquarters

Faults:



Not enough bend of stifle



Hock-angulation too steep

Tail

Tail: High set, and carried curled over the back or slightly hanging to one side. The tail is bushy and can be carried hanging, when the dog is at ease.



3 examples of correctly carried tails.



Fault:

Tail carried too open.

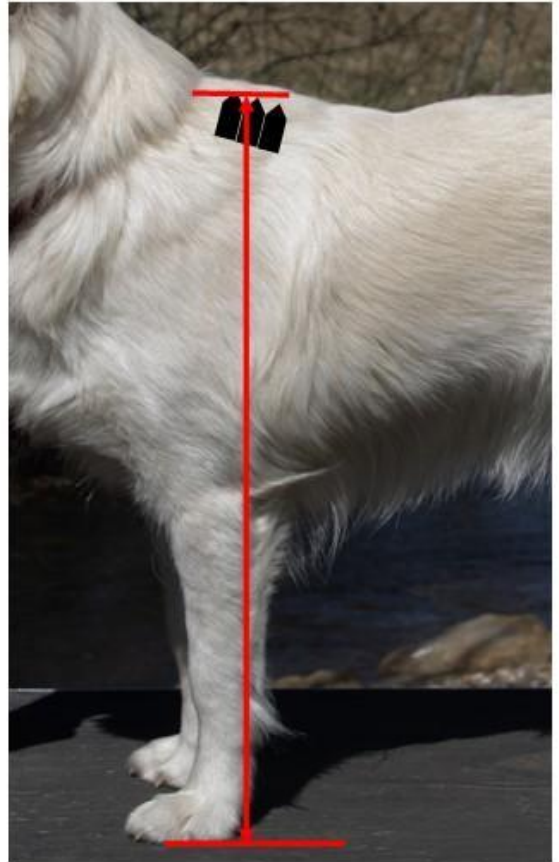


Size

Height at the withers:

Males: 43 – 49 cm. – The ideal height is 46 cm.

Females: 39 – 46 cm. – The ideal height is 41 cm.



Faults:

Any departure from the foregoing points should be considered a fault. The seriousness with which the fault should be regarded, should be in exact proportion to its degree and its effect upon the health and welfare of the dog.

- The gender not clearly defined
- Loose eye lids
- Light eyes
- The ears not pointed
- The coat light brown or pure white
- Samoyed expression/resemblance of a Samoyed

Disqualifying Faults:

- Aggressive or overly shy dogs
- Any dog clearly showing physical or behavioral abnormalities.
- Overshot or undershot